

Gestetner

DSm616
DSm620
DSm620d

**DIGITAL IMAGING
SYSTEMS**



The do-it-all systems
for meeting the demands
of business.

Gestetner



Get More Done.

Gestetner Digital Imaging Systems combine the power of network connectivity with printing, scanning and faxing—all from one location.

Based on your specific applications and requirements, Gestetner provides the right solution to boost your productivity, save you money and sharpen your competitive edge.

For further information or a demonstration of the DSm616/DSm620/DSm620d or other Gestetner Digital Imaging Systems, contact your authorized Gestetner dealer.

www.gestetnerusa.com

Copy, print, scan, fax— everything you need to handle the hardcopy and digital docu- ment demands of your office.

Today, everyone expects more. More service. Faster turnaround. Higher quality. Instant response. Seamless communication. Introducing the Gestetner DSm616/DSm620/DSm620d Digital Imaging Systems. From copying, network printing and scanning, to distributing your documents instantly by e-mail and fax, they have all the functionality you need to help meet the increasing demands of your workplace.



Access advanced digital features right from the control panel. Easily navigate copy, print, scan, fax and document management functions with the 4-line, 27-digit backlit display and 4 cursor keys.

High-quality copies, fast

Copies are the backbone of nearly every office document stream. And the Gestetner DSm616/DSm620/DSm620d systems can easily handle the copying needs of small to medium offices or workgroups. They can produce up to 21 clear, high-resolution copies per minute up to 11" x 17" in size. And they require only up to 30 seconds to warm up and just 6.5 seconds to output your first copy.

In addition, the systems include the time- and labor-saving features you'd expect on much larger systems, including Image Rotation, Electronic Sorting and more. All designed to minimize copy time and maximize quality.

Taking the work out of network printing

The Gestetner DSm616/DSm620/DSm620d systems make connecting to your existing network simple and intuitive.

- Connect seamlessly to almost any network in the world with standard Ethernet and USB 2.0 Interfaces.
- Connect directly to PCs that you don't need—or don't want—to network with an IEEE 1284 Parallel interface.
- Pull the plug on wires and cables altogether with Wireless LAN and Bluetooth, freeing you to set up quick, temporary or permanent workstations for visitors or employees.

- In addition, the systems can handle virtually all of the most common business applications in use today with their standard PCL 5e/6 print drivers and available Adobe® PostScript® 3™. And when this powerful suite of drivers is combined with Gestetner's Refined Print Command Stream (RPCS™) driver, you can simplify even your most complex jobs to the point of selecting a single icon and clicking PRINT.

Turning your hardcopies into powerful digital documents

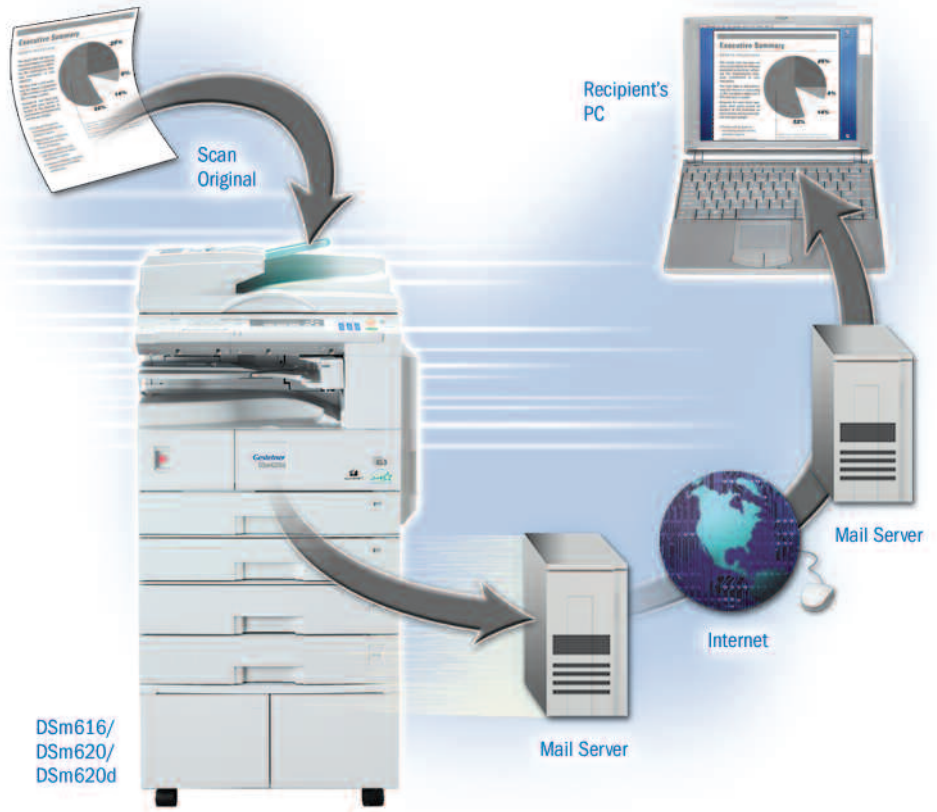
Many organizations want their documents in e-mail format; that's how they do business. The Gestetner DSm616/620/620d can get you there in basically one step.

- Scan text documents to high-resolution, 600 dpi images with the Scan-to-Email feature and send them directly to e-mail addresses over the Internet. It's a fast, efficient way to get your hardcopy documents into the digital mainstream.



- Take digitizing your documents one step further with network TWAIN scanning, allowing you to scan and then incorporate your hard copy information directly to your PC.

SCAN-TO-EMAIL



Send documents from the DSm616/DSm620/DSm620d with Embedded Scan-to-Email. Just scan hardcopy documents and then immediately distribute them to multiple e-mail addresses, saving both time and money.

System management—right from your desktop

Once your Gestetner DSm616, DSm620 or DSm620d digital imaging system begins boosting your day-to-day productivity, you'll want to keep it in complete readiness with as little effort as possible. That's the purpose of Web SmartDeviceMonitor and Web Image Monitor, which do exactly what their names describe: they allow you to monitor your

document management system over the Web from any networked PC. You can check the status of a variety of key functions, including the general system status, paper and toner levels, job log and address book. So you never have to patrol your office or wait for someone to inform you that something needs attention when time is of the essence.

DSm616 DSm620 DSm620d

Digital faxing—powerful and inexpensive

- Quickly transmit important business communications with Super G3 33.6 Kbps modem and JBIG compression, at a speedy 3 seconds per page, which dramatically reduces phone costs.
- Scan and digitize documents and send them via Internet fax—without having to pay long-distance phone or paper costs.
- You can reduce paper costs and streamline your communications further with the LAN-Fax feature, which takes full advantage of your LAN to distribute digital documents without leaving your desk.

Doing more, costing less

The Gestetner DSm616/DSm620/DSm620d systems were designed to help you meet the growing demands of your office. They allow you to communicate with all of your key contacts in whatever format they prefer: by hardcopy or print, over the Internet, by e-mail, LAN or fax. But they're also designed to help keep your everyday costs of doing business to a minimum.

- Effectively double your print speed while cutting paper usage in half with automatic duplexing; it lets you print on both sides of a page at once—with no drop off in speed.
- Cut errors and paper waste with automatic image rotation, which ensures that your image scans are oriented in the same direction as the paper in your paper trays.
- Eliminate time-consuming manual collation with electronic rotate sorting, which produces complete sets of your documents automatically.

Doing our part to save energy and resources

When it comes to the environment, every little bit helps. With the Gestetner DSm616/620/620d digital imaging systems, the little things we've built into them to cut energy consumption and conserve resources can add up to big savings over the long haul.

- Energy Saver Mode is a standard feature in Gestetner products; the longer your system stays in this mode, the less energy it uses. Gestetner Quick Start Up (QSU) Technology requires just 10 seconds to fire back up to copy readiness.



Our earth,
Our tomorrow

Your Environmental Partner

The Gestetner DSm616/DSm620/DSm620d digital imaging systems are Energy Star® compliant, continuing our longstanding commitment to developing office solutions with superior energy and supply-saving features, including:

- Quick Start Up (QSU) Technology
- Toner Recycling
- Power-saving Sleep Modes
- Low Noise Levels
- Duplex and Combine Copy Modes
- Minimal Ozone Emissions



Select the configuration that meets the needs of your office.



DSm616spfx: For efficient document management in a space-saving design.



DSm620spfx: For productive document management, including a One-Bin Tray.



DSm620dspfx: For total document management, including a One-Bin Tray and Duplexing capability.

DSm616 DSm620 DSm620d

CONTROL PANEL

Easy-to-read Control Panel makes operation simple and intuitive.

ONE-BIN TRAY

Additional 100-sheet Output Tray separates copy output from prints or faxes and lights up when output is present. (Available on DSm620/DSm620d).

PAPER TRAYS

1 or 2 x 250-sheet Paper Trays (standard) are user-adjustable and accommodate paper weights up to 24 lb.

OPTIONAL PAPER TRAYS

1 or 2 x 500-sheet Paper Trays boost capacity to 1,350 sheets (DSm616) or 1,600 sheets (DSm620/620d), maximize the time between refills and hold up to five different sizes or orientations of paper.



DOCUMENT FEEDERS

Automatic Document Feeder (30-sheet capacity) or Automatic Reversing Document Feeder (50-sheet capacity) handles multi-page originals with ease—even mixed sizes up to 11" x 17".

INDICATOR LIGHT

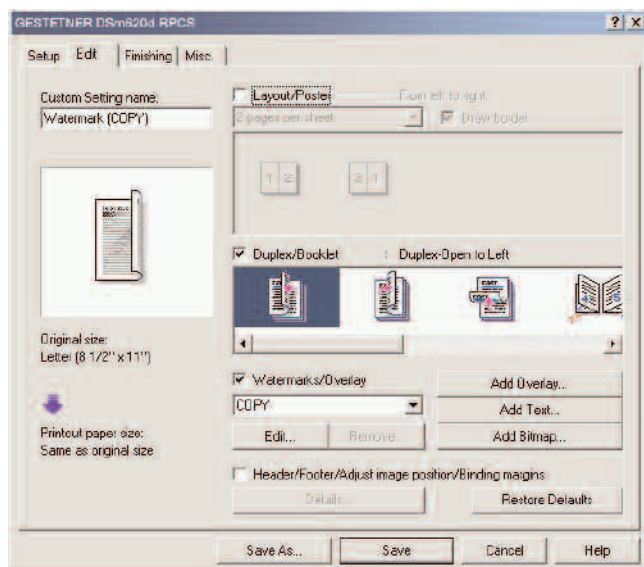
Illuminates when documents are in the tray, informing you immediately when your job is completed.

BYPASS TRAY

Bypass Tray (100-sheet capacity) lets you switch to different paper stocks or sizes quickly and easily.

STORAGE CABINET


Spacious Storage Cabinet keeps supplies handy.



Simplify complex print jobs with Refined Print Command Stream (RPCS)

Even the most complicated jobs can be simplified to one click with the proprietary RPCS driver. The icon-based driver provides comprehensive job control that allows even novices to create complex, professional documents easily.

Gestetner DSm616/DSm620/DSm620d Specifications

ENGINE SPECIFICATIONS	NETWORK PRINTER SPECIFICATIONS (OPTION)	FAX SPECIFICATIONS (OPTION)
<p>Imaging Process Dry Process (dual component)</p> <p>Reading Element Solid State Scanner</p> <p>Configuration Console</p> <p>Resolution 600 x 600 dpi</p> <p>Grayscale 256 Gradation Levels</p> <p>Paper Supply 250-Sheet Tray (DSm616) 250 Sheets x 2 Trays (DSm620/DSm620d)</p> <p>Bypass 100 Sheets, #10 Envelopes</p> <p>Paper Weight 16 to 24 lb. Bond (Paper Trays) 16 to 42 lb. Bond (Bypass Tray)</p> <p>Output Tray Capacity 250 Sheets</p> <p>Power Source 120V/60Hz/15A</p> <p>Dimensions (WxDxH) 21.65" x 22.36" x 16.54" (DSm616) 21.65" x 22.36" x 21.97" (DSm620) 23.11" x 22.36" x 21.97" (DSm620d)</p> <p>Weight 78 lbs. (DSm616) 96 lbs. (DSm620) 103 lbs. (DSm620d)</p>	<p>Print Speed 16 PPM (DSm616) 20 PPM (DSm620) 21 PPM (DSm620d)</p> <p>Interface Standard Ethernet10/100BaseT Standard USB 2.0 Optional IEEE1394 Optional IEEE802.11b Wireless LAN Optional Bluetooth Optional IEEE1284 Parallel</p> <p>Resolution 600 x 600 dpi</p> <p>Network Protocol TCP/IP; IPX/SPX; AppleTalk (Auto switching); NetBEUI*</p> <p>CPU Speed 240 Mhz</p> <p>Memory Capacity 192 MB shared with copier, scanner and fax</p> <p>PDL Standard RPCS, PCL 5e/6 Optional Adobe PostScript 3</p> <p>Network Operating System Windows 9x, Me, NT4.0, 2000, 2003, XP, Macintosh 8.6-OSX 10.1 or later, UNIX</p> <p>*SmartDeviceMonitor for client is required.</p>	<p>Circuit PSTN, PBX</p> <p>Compatibility ITU-T G3</p> <p>Modem Speed 33.6 Kbps V.34 w/Auto Shift Down</p> <p>Transmission Speed G3; 3.0 Seconds*, **</p> <p>Scanning Speed 1.0 Second</p> <p>Data Compression MH, MR, MMR, JBIG</p> <p>Resolution 200 x 100/200/400 dpi</p> <p>Page Memory 3 MB (240 Sheets*)</p> <p>Memory Backup 1 Hour</p> <p>Quick Dials 32</p> <p>Speed Dials 150</p> <p>Group Dials 10 (max. 100 per group)</p> <p>*Based on ITU-Test Chart #1 in standard mode. **Approximately 3 seconds per page at 33.6 Kbps is dependent on optimal line quality. Customer performance may vary by location.</p>
COPIER SPECIFICATIONS	PRINTER FEATURES	FAX FEATURES
<p>Warm Up Time (Basic/spf) 15 Seconds/30 Seconds</p> <p>First-Copy Speed 6.5 Seconds</p> <p>Multi-Copy Speed 16 copies/minute (DSm616) 20 copies/minute (DSm620) 21 copies/minute (DSm620d)</p> <p>Quantity Indicator 1-99</p> <p>Original Type Sheet/Book</p> <p>Original Size Up to 11" x 17"</p> <p>Copy Size 5.5" x 8.5" to 11" x 17"</p> <p>Reproduction Ratios 50%; 65%; 78%; 93%; 121%; 129%; 155%</p> <p>Zoom 50% to 200% in 1% increments</p> <p>Memory Capacity 16 MB</p>	<p>Automatic Tray Selection Layout</p> <p>Auto Tray Switching Paper Size Settings</p> <p>Envelope Printing Watermarks</p>	<p>AI Short Protocol LAN-Fax***</p> <p>Authorized Reception Manual Reception</p> <p>Auto Reduction Page Retransmission</p> <p>Batch Transmission Parallel Memory Transmission</p> <p>Battery Backup Reception Time Printing</p> <p>Dual Access Restricted Access</p> <p>Duplex Fax Transmission (DSm620d) Send Later</p> <p>Error Correction Mode Serial Broadcasting</p> <p>Inbound Fax Routing*** Substitute Reception</p> <p>Inbound Fax (T.37)*** User Function Keys (3)</p> <p>***Requires optional all-in-one kit</p>
COPIER FEATURES	NETWORK SCANNER SPECIFICATIONS (OPTION)	ACCESSORIES
<p>Auto Image Density Image Rotation</p> <p>Auto Paper Select Photo Mode</p> <p>Auto Reduce/Enlarge Rotate Sorting*</p> <p>Auto Start Scan Once, Print Many</p> <p>Auto Tray Switching* Series Copying</p> <p>Combine Originals (2/4) User Codes (50)</p> <p>Electronic Sorting User Tools</p> <p>Energy Saver Mode</p> <p>*Requires optional Paper Bank on the DSm616.</p>	<p>Scan Speed ScanRouter: 43 ipm (@ 200 dpi) TWAIN Driver: 25 ipm (@ 200 dpi)</p> <p>Interface Standard Ethernet 10/100BaseT Optional IEEE1394 Optional IEEE802.11b Wireless LAN</p> <p>Optical Resolution 600 dpi</p> <p>Compression Binary: MH (default), MR, MMR</p> <p>Maximum Original Size 11" x 17"</p> <p>Network Protocol TCP/IP</p> <p>Memory Capacity 192 MB shared with copier, printer and fax</p> <p>Original Size Up to 11" x 17"</p> <p>File Formats TIFF, PDF</p>	<p>DF78 Automatic Document Feeder</p> <p>Original Size 5.5" x 8.5" to 11" x 17"</p> <p>Original Weight 14 to 28 lb. Bond</p> <p>Original Capacity 30 Sheets</p> <p>Dimensions (WxDxH) 21.6" x 18.5" x 3.55"</p> <p>Weight 15.4 lbs.</p> <p>DF79 Automatic Reversing Document Feeder (DSm620d)</p> <p>Original Size 5.5" x 8.5" to 11" x 17"</p> <p>Original Weight Simplex Original: 10 to 34 lb. Bond; Duplex Original: 14 to 28 lb. Bond</p> <p>Original Capacity 50 Sheets</p> <p>Dimensions (WxDxH) 21.6" x 18.5" x 5.1"</p> <p>Weight 22.1 lbs.</p> <p>PS450 Paper Bank*</p> <p>Paper Capacity 500 Sheets x 2 Trays</p> <p>Paper Size 5.5" x 8.5" to 11" x 17"</p> <p>Paper Weight 16 to 28 lb. Bond</p> <p>Dimensions (WxDxH) 21.6" x 20.5" x 10.6"</p> <p>Weight 55.1 lbs.</p> <p>PS460 Paper Bank*</p> <p>Paper Capacity 500 Sheets x 1 Tray</p> <p>Paper Size 5.5" x 8.5" to 11" x 17"</p> <p>Paper Weight 16 to 28 lb. Bond</p> <p>Dimensions (WxDxH) 21.6" x 20.5" x 5.3"</p> <p>Weight 26.1 lbs.</p> <p>Type PT340 One-Bin Tray</p> <p>Paper Size 5.5" x 8.5" to 11" x 17"</p> <p>Paper Weight 16 to 28 lb. Bond</p> <p>Paper Capacity 100 Sheets</p> <p>Dimensions (WxDxH) Unit: 8.5" x 18.9" x 4.1" Tray: 13.2" x 15.4" x 1.7"</p> <p>Weight 3.5 lbs.</p> <p>*Cabinets Available</p>
COPIER FEATURES	SCANNER FEATURES	
	<p>Black-and-White Scanning</p> <p>Duplex Scanning (DSm620d)</p> <p>Embedded Scan-to-Email</p> <p>Image Rotation</p> <p>Network TWAIN Scanning</p> <p>ScanRouter Lite</p>	

Gestetner

Gestetner Five Dedrick Place, West Caldwell, NJ 07006

Gestetner is a registered trademark of Ricoh Corporation. Windows® and Windows® 95/98/Me/NT4.0/2000/XP are registered trademarks of Microsoft Corporation. Macintosh®, Mac® OS and AppleTalk® are registered trademarks of Apple Computer, Inc. Adobe® and PostScript® are registered trademarks of Adobe Systems, Inc. PCL® is a registered trademark of Hewlett-Packard Company. RPCS™ is a trademark of Ricoh Company, Ltd. All other trademarks are the property of their respective owners. Print speed may be affected by network, application or PC performance. Specifications and external appearances are subject to change without notice. Products are shown with optional features.

♻️ Printed in U.S.A. on recycled paper. G2132

